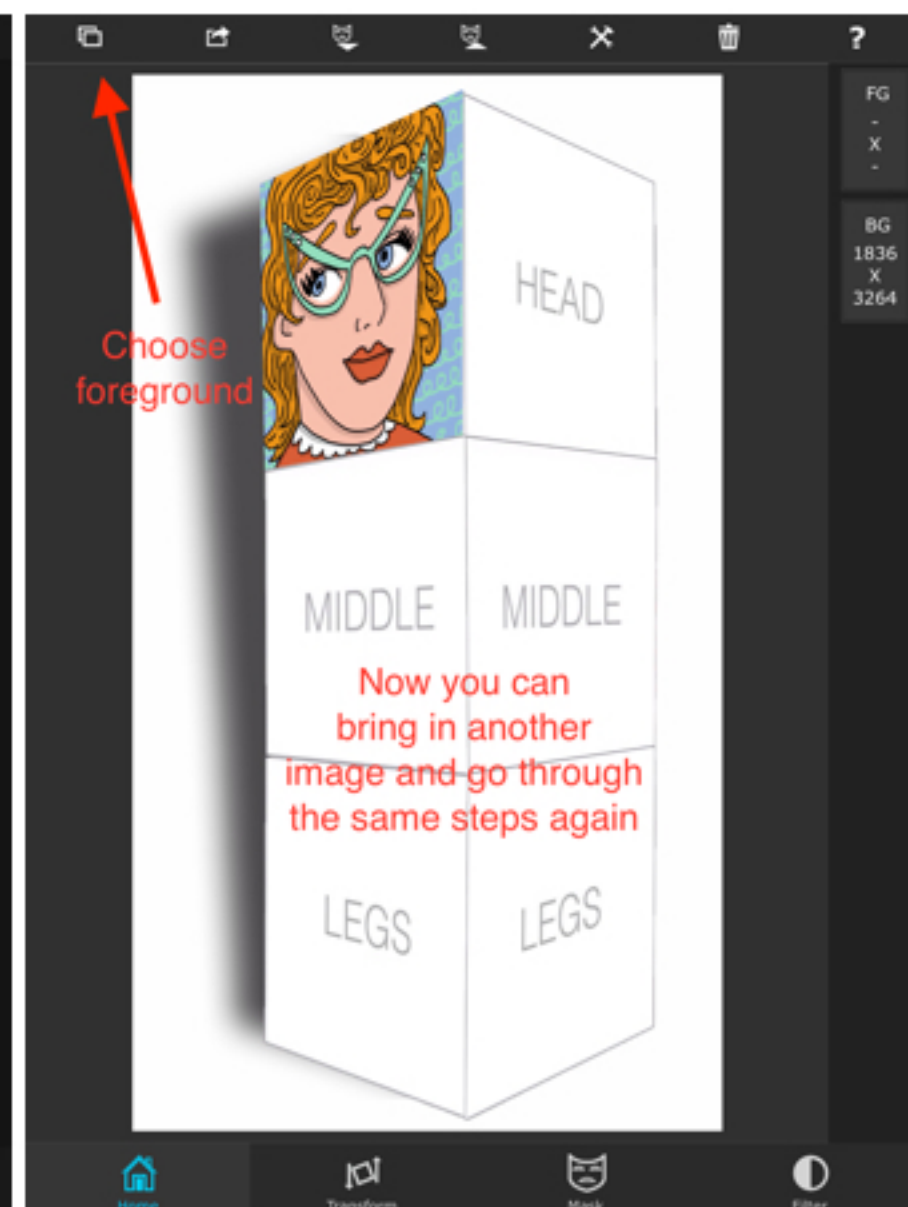
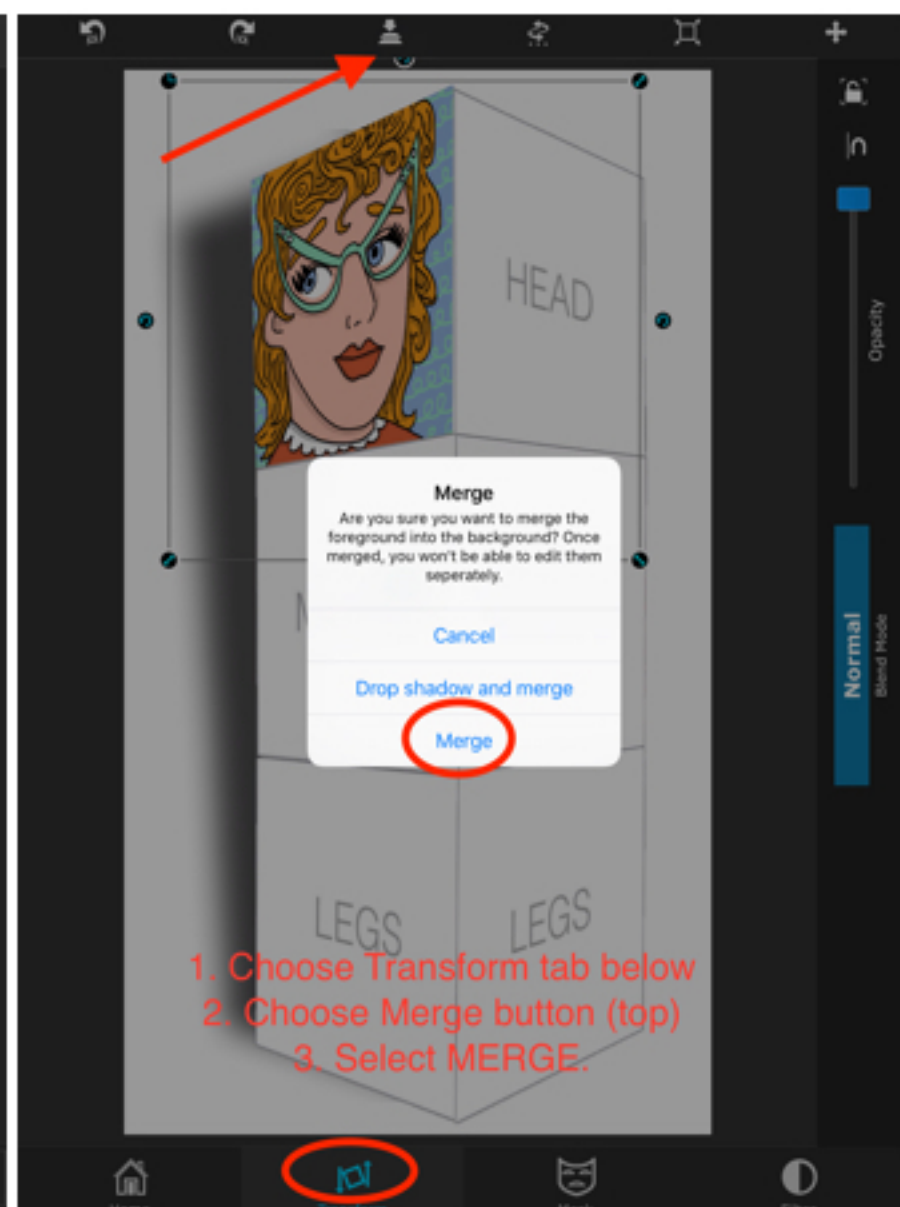
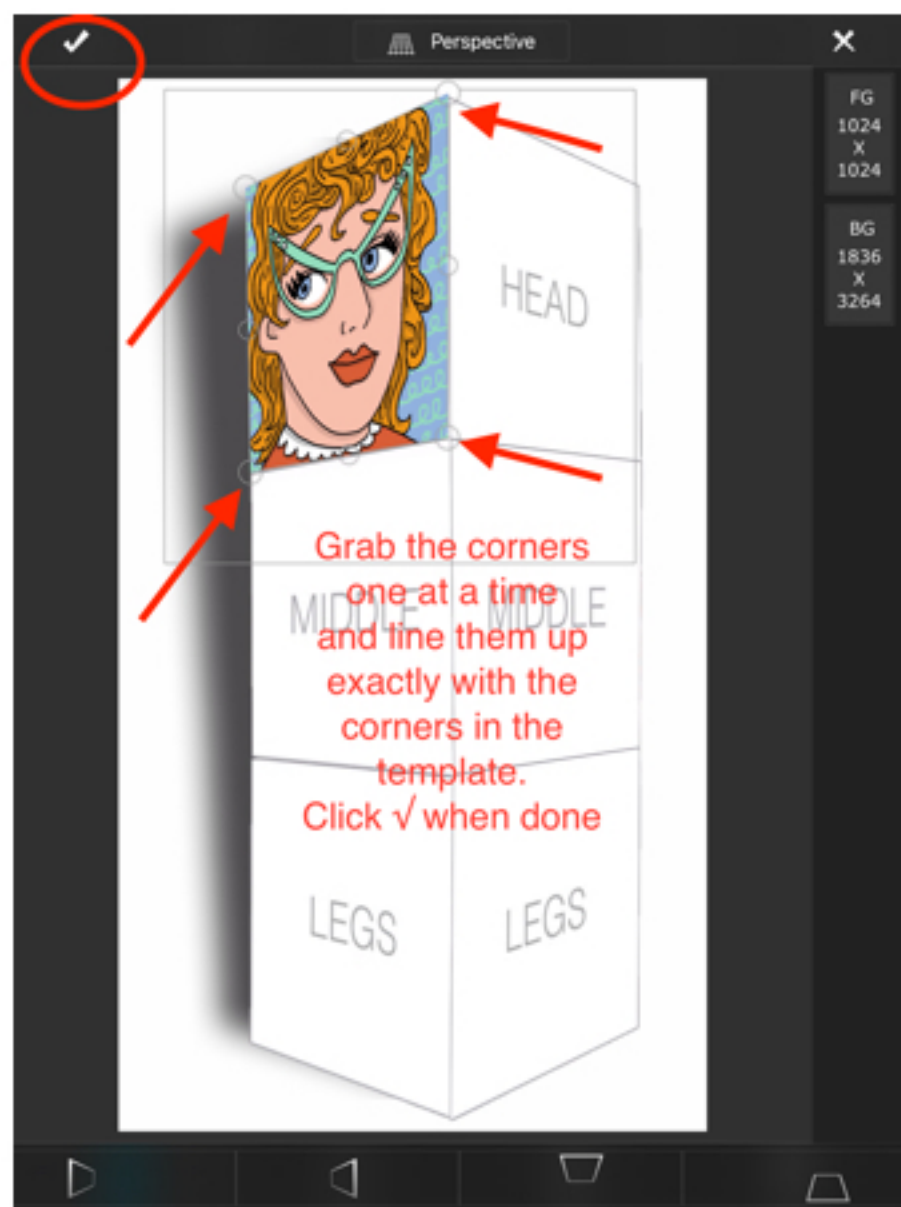


1. Import the template as the background
2. Import the first image as the foreground.
3. Select Transform.
4. Size it larger than the space you want to fill.
5. Place it over that space.

7. Chose the home tab
8. Click the tools button at the top of the screen
9. Choose "Foreground". Now you are in the Perspective Mode

Perspective in Superimpose

10. Chose the angle of perspective that matches your needs. Our template need the 2nd perspective choice when working on the LEFT side and the 1st choice for the RIGHT.



11. Grab the corners of the image (one at a time) and place them exactly over the corners of the template. Do not hit the ✓ until you've lined up the image perfectly.
12. Click the ✓ to finalize.

13. Choose the transform tab at bottom.
14. Choose MERGE button at top to flatten your image onto the template and free up foreground layer. Caution-no more changes.

15. Now, you've added one image to your template and have a free foreground layer to repeat the process. Choose the layers button (top left)
16. Repeat steps 1-15